

LIFE BUILDING

Offices per standard floor

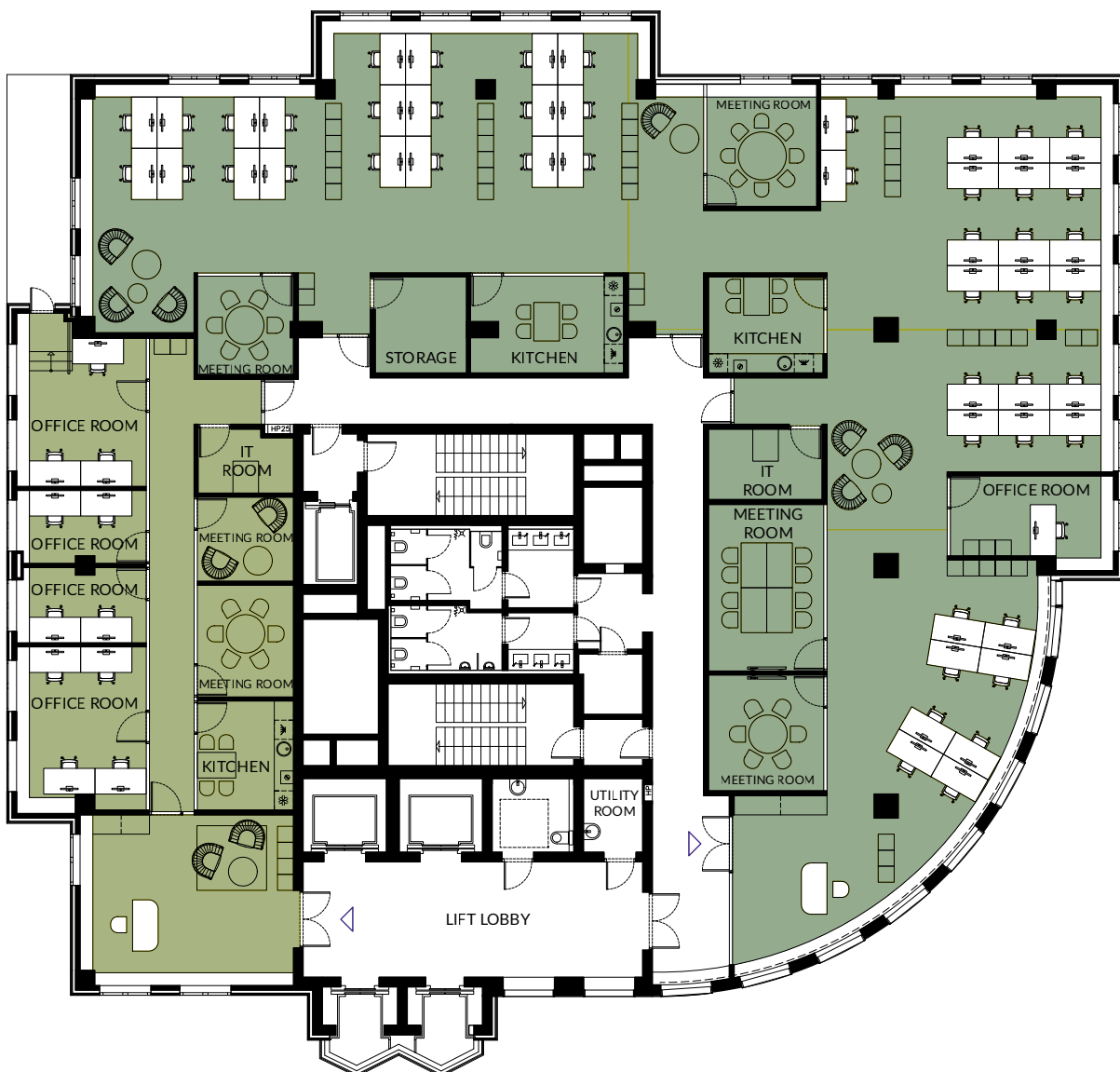
Each floor can be divided according to your needs: 1 unit (single tenant) | 2 units | 3 units

FLOORPLAN OPTION 02

OFFICES PER FLOOR 160 - 470m²

● 12 WORKPLACES | 160m²

● 50 WORKPLACES | 470m²



LIFE_building Warsaw Al. Jana Pawła II 25 Warsaw